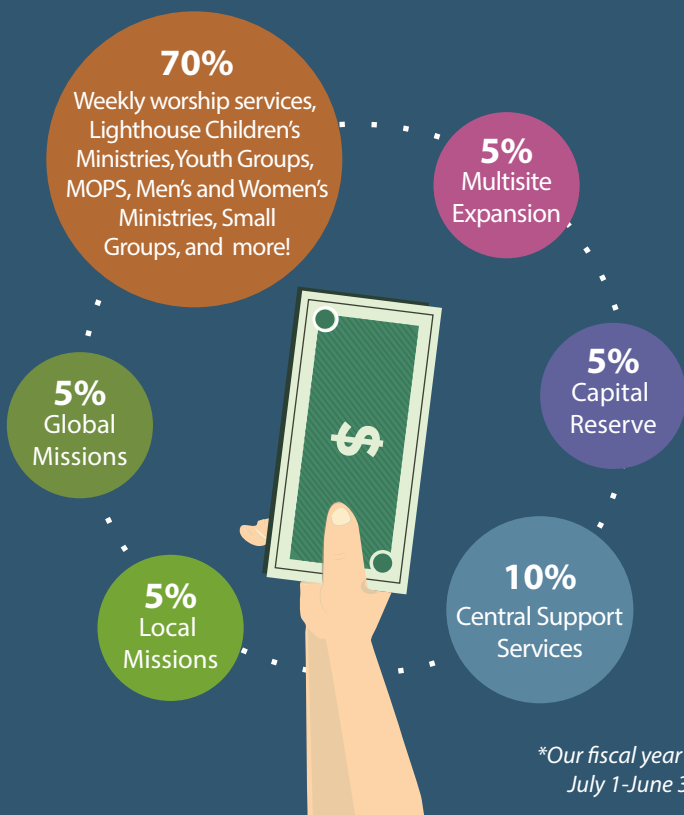


Thank you for giving to **CHRISTCHURCH**

We are excited that you have partnered with us in our mission to **help people discover life with God.**

Each year we set a budget in line with our vision to fuel a movement that **reaches people and renews communities.**

This year's budget is \$5.3M. We commit our funds according to the following principles below:



CONTACT FINANCE@CCLF.ORG
FOR MORE INFORMATION

“Each of you should give what you have decided in your heart to give, not reluctantly or under compulsion, for God loves a cheerful giver.”
-2 Corinthians 9:7

Generosity is a lifelong journey whereby we give of the resources God has given to us as stewards. No matter where you are on your generosity journey we encourage you to pray that God would direct you how much to give and where to give.

FIRST GIFT

If you have never given, make your first gift today and experience the joy of giving.

CONSISTENT GIVING

If you are an infrequent giver you can sign up for automatic withdrawals of any amount with Pushpay or through Christ Church ACH.

PERCENTAGE GIVING

As you set budget priorities you select an amount to give monthly. Perhaps a percentage of your household income.

TITHING

Tithing, giving 10% of income, was a regular practice in the Bible.

SURPLUS GIVING

Giving more than 10% of your household income.



Text "Christ Church" to

77977

to make a first gift or sign up for automatic donations

WWW.CHRISTCHURCHIL.ORG/GIVE